





CONTACT WITH US




ISTANBUL Head Office


 info@destechship.com


 Yesilbaglar Street , D100 Way Pera Pendik Office
Building No: 20 Floor : 10 Office Number: 50
Pendik / Istanbul / TURKEY


 www.destechship.com


 +90 216 766 06 70
+90 541 691 48 99

ROTTERDAM Office

 rotterdam@destechship.com

 De Brauwweg 22-30 3125 AE Schiedam
Rotterdam / The Netherlands

 www.destechship.com

 +31 6 42489836


**Destechship
Ltd. Co.**



About Us;

Destechship provides reliable and high quality of technical support and consultancy services for commercial ships over 25 years with a clear focus on customer satisfaction.

We are a trustworthy company running business in maritime sector. We work in close cooperation, coordination and collaboration with our customers and understand their requirements and expectations. In this respect, we offer safe, transparent, reasonable, efficient, and cost-effective services and tailor-made solutions in order to meet our customers' needs.

Our Services Are:

- ⚓ New shipbuilding projects management or supervision
- ⚓ Ship repair projects management and/or supervision
- ⚓ Port or anchorage attendance for the audits of ships
- ⚓ Ships Pre-purchase inspections (Worldwide)
- ⚓ Technical support and consultancy in Marine Sector
- ⚓ BWTS Installation and Commissioning
- ⚓ Repair During Anchorage or Pier
- ⚓ Electrical Works

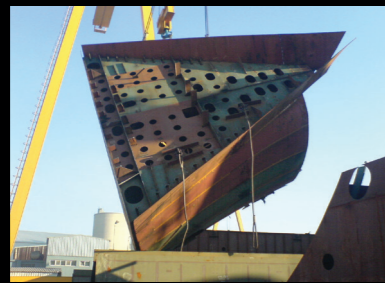


New Building Project Management or Supervision

New shipbuilding project management is conducted based on technical management, consultancy (physical works & paper works) and coordination between all involving parties such as shipyard, classification societies, manufacturers, suppliers etc. Regular weekly progress report is also submitted to customer.

Design and equipment review,
Technical negotiations,
Ship yard contract review,
Technical specification review,
Newbuilding site supervision, owner's representation and reporting,
New shipbuilding supervision is involved from design stage to delivery of ship to owner. Our marine professionals ensures that the ship is built in full compliance with the contract, specifications and present rules and regulations. Under supervision steel works, light steel outfitting, piping, blasting and coating, deck and engine room machinery works etc. are regularly controlled according to related classification society. We perform :

- ⚓ Visual inspections, marking, fit up and welding control etc according to related Classification Society Rules.
- ⚓ Regular weekly status report (consisting of inspections, our remarks, photos & video records and related issues) is submitted to customer.
- ⚓ Attendance meetings with all parties (Shipyard, class, subcontractors etc.) on behalf of owner
- ⚓ Witness of UT, MPI, Vacuum test, tanks air leakage tests, tanks hydrostatic tests, pipeline pressure tests, machinery / equipment/systems operation tests on behalf of owner
- ⚓ Assist Class surveyors and 3rd parties engineers/experts
- ⚓ Sea trial attendance on behalf of owner.
- ⚓ Ship delivery progress coordination between shipyard and owner

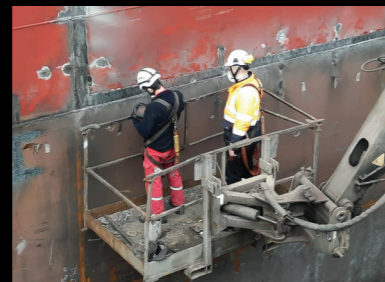


Ship Repair Management and Supervision :

- ⚓ Main engine and auxiliary engine overhauls, Steel works ,Steel outfitting works,
- ⚓ Steel, Stainless steel and CuNiFe piping, Hatch covers, Blasting and painting,
- ⚓ Propulsion plant and rudder maintenance, Hydraulic systems and lines repair

We perform for above works:

- ⚓ Visual inspections, marking, fit up and welding control etc according to related Classification Society Rules.
- ⚓ Regular daily status report (consisting of inspections, our remarks, photos & video records and related issues) is submitted to customer.
- ⚓ Attendance meetings with all parties (Shipyard, class, subcontractors etc.) on behalf of owner
- ⚓ Ships Pre-purchase inspections (Worldwide)
- ⚓ Witness of UT, MPI, Vacuum test, tanks air leakage tests, tanks hydrostatic tests, pipeline pressure tests, machinery / equipment / systems operation tests on behalf of owner
- ⚓ Assisting of Class surveyors and 3rd parties engineers/experts



Port Attendance for Audits of Ship

Ship audits are carried out by our marine experts in order to verify whether ships are in full compliance with international maritime conventions, codes, rules and regulations, flag and port state and MOU's requirements. Decks, hatch covers, hatch coamings, cargo holds, accommodation, engine room, lifesaving and firefighting equipments, statutory certificates, navigational equipment, charts and publications, checked and inspected during audits and then an audit report is submitted to ship-owners.

Ship Pre - Purchase Inspection

- ⚓ Ship Pre-purchase Inspection is used by shipowners, ship operators, shipbrokers, banks, P&I clubs, and S&P companies to gain a full insight into the ship's current condition, and to mitigate the significant financial risks when acquiring second-hand ships.
- ⚓ Our marine experts carry out a detailed ship inspection and conduct the most efficient and detailed assessment of the ship condition. Further to inspection, a pre-purchase inspection report indicating exact condition of the ship is submitted to customer.
- ⚓ Inspection methodology includes a visual inspection and usually a pre-purchase inspection covers the following.
- ⚓ Documentation (Classification records, PSC records, ISM records, Statutory records etc.) and Statutory & Class Certificates.
- ⚓ Management, technical documentation and maintenance records and manning.
- ⚓ Hull and superstructure, anchors, chains, windlass, mooring equipment, deck machinery and fittings.
- ⚓ Ballast tanks, bunker tanks and FW tanks, void spaces
- ⚓ Hatch covers, hatch coamings, cargo gears, cargo holds and cargo equipment.
- ⚓ Engine room, main and auxiliary engines, machinery and bunkering, bilges, propeller, rudder and steering systems, bow-thruster.
- ⚓ Bridge and navigation equipment, charts and public.

Technical Support and Consultancy :

We provide a wide range of technical support and consultancy for commercial ships taking into consideration theoretical, practical, and statutory requirements as well as best industry practices available in the maritime sector. We look after the proper maintenance, repairs and surveys of ships and carry out on board visits and inspections.

BWTS Installation and Commissioning :

According to owner supply design and maker company requests :

(if required we can supply design company and maker for BWTS system installation.)

- 🔧 BWTS Equipment installation
- 🔧 Pipelines manufacturing, galvanising pipes and fit up
- 🔧 Electrical cable installation and connections to main switchboards
- 🔧 Start up and commissioning



Repair During Anchorage or Port:

Supervising and managing minor repair services on deck and engine room. Steel works, steel outfitting, pipe lines, paint, hatch covers, Ultrasonic thickness measurement, electrical works, insulation & panel works and air conditioning system, ME covers dismantling and mounting, auxiliary engines overhauls etc.

Electrical works:

- 🔧 Internal and external lighting
- 🔧 12 V, 24 V, 220 V, 380 V power supply cabling and connections
- 🔧 Electric motors coil winding, switchboard repairs
- 🔧 Alarm monitoring tests and fixing problems
- 🔧 Firefighting alarm tests and fixing problems
- 🔧 Alternators of generators and shaft alternators overhauls
- 🔧 Bridge deck electric works
- 🔧 Deck equipment electric works
- 🔧 BWTS electric works (involved cable installation and connections)
- 🔧 Electrical circuit diagrams drawings

